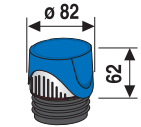
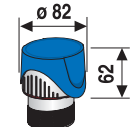


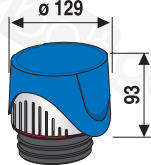
Montage - Installation



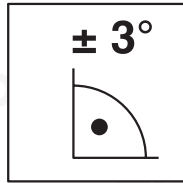
DN 30 - 50



G 1 1/2/
DN 40-50



DN 70 - 100



DN 30



DN 40



DN 50



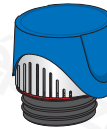
G 1 1/2



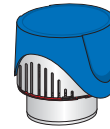
DN 40



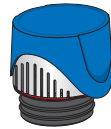
DN 50



DN 70

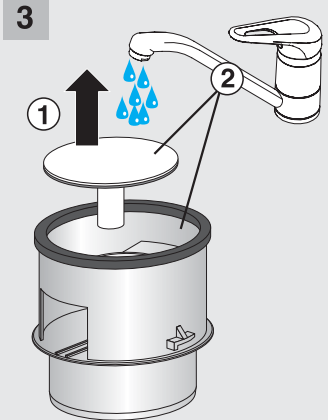
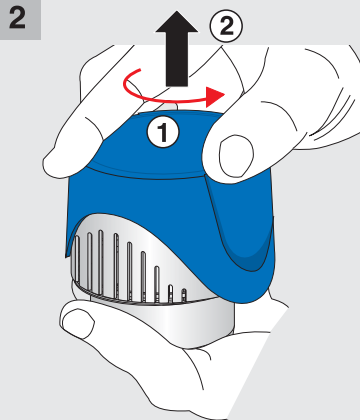
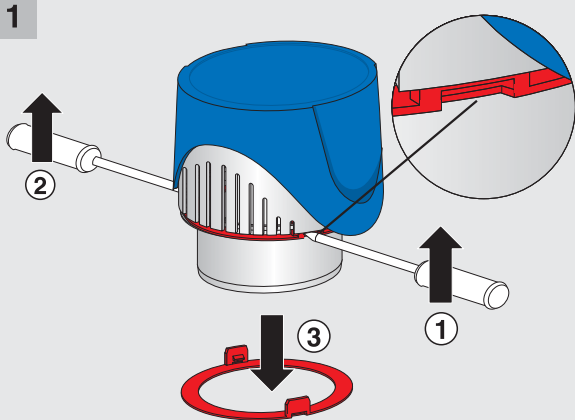


DN 90

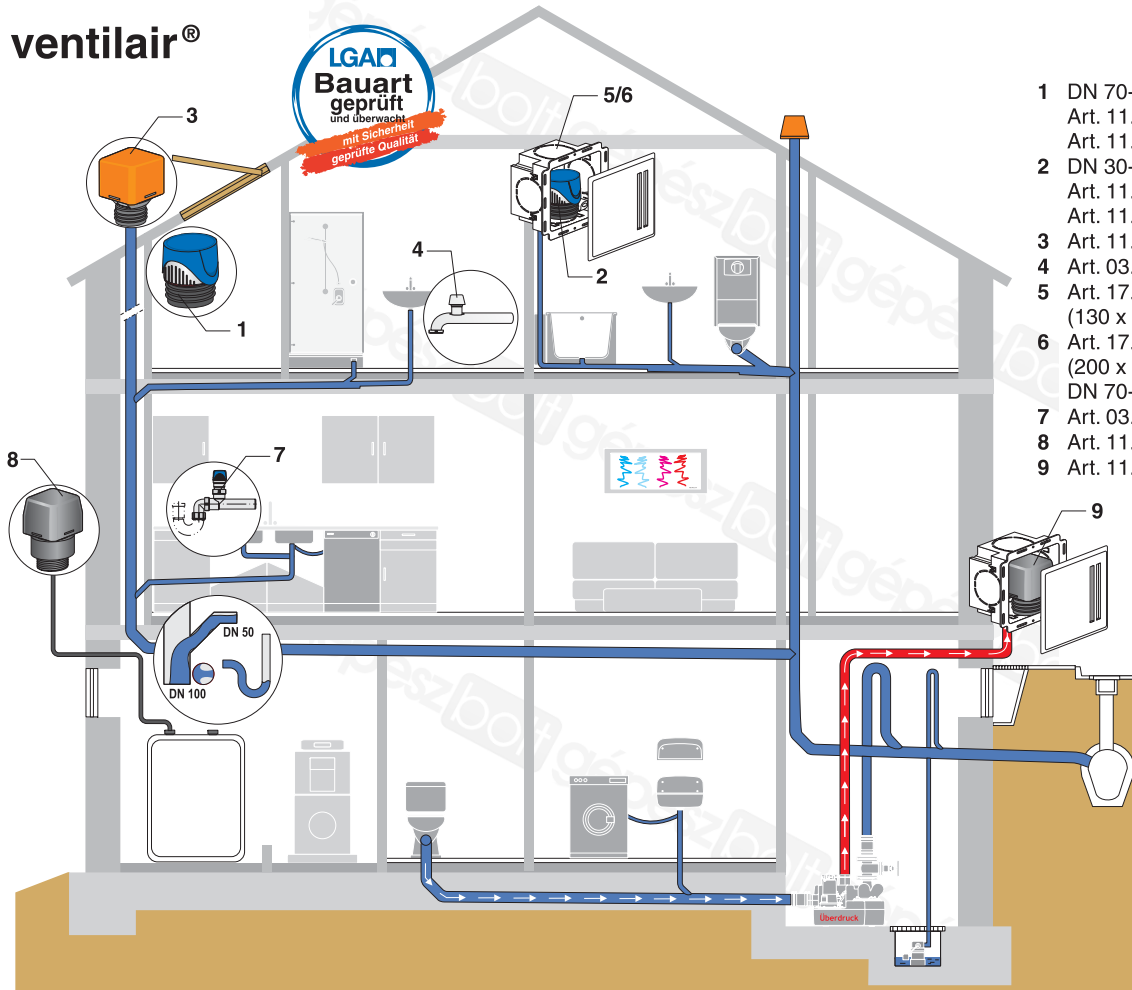


DN 100

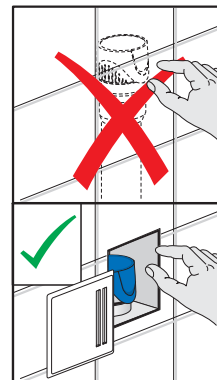
Wartung/Inspektion - Service



ventilair®



- 1 DN 70-100
Art. 11.A21.00..0099
Art. 11.021.00..S001 (Version CH)
- 2 DN 30-50
Art. 11.A20.00..0099
Art. 11.020.00..S001 (Version CH)
- 3 Art. 11.A23.00..0099
- 4 Art. 03.091.00..0099
- 5 Art. 17.270.01..0099
(130 x 150 x 93 = DN 30-50)
- 6 Art. 17.271.01..0099
(200 x 210 x 133 =
DN 70-100)
- 7 Art. 03.001.00..0099
- 8 Art. 11.A24.00..S099
- 9 Art. 11.A24.00..0099



EM.302.42..0000 · X/13